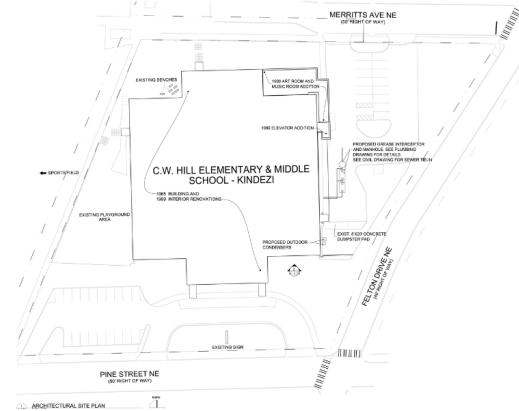


Project: CW Hill Elementary and Middle School
Week Ending: November 8, 2024

- Continued layout and framing of stud walls on level 2.
- Continued drywall top out level 2
- Continued drywall one side level 2
- Continued electrical wall rough in level 1
- Continued electrical wall rough in on level 2
- Continued overhead electrical rough in level 2
- Started duct insulation and repair of installation on level 2
- Continued installing hangers for the fire sprinkler lines on level 2
- Continued layout and framing of stud walls on level 1



A photograph of a building's exterior wall, showing vertical metal framing and insulation. A yellow icon with three horizontal lines is overlaid on the right side of the image.

*Installing duct insulation for
bathrooms on level 2.*



Stud wall framing in classrooms on Level 1.



Stud wall framing in classrooms on Level 1.

NEXT WEEK – November 11th - November 15th

- Continue drywall hanging on level 2
- Continue duct insulation and repair of installation on level 2
- Continue plumbing wall rough in on level 1
- Continue overhead electrical rough in on level 2
- Field measure for cooler freezer
- Continue electrical wall rough in on level 1
- Continue installing hangers for the fire sprinkler lines on level 2
- Continue layout and framing of stud walls on level 1

Final Completion Date

- June 30, 2025

PREPARED BY:

Orisamola Richardson, Carroll Daniel Construction Co.